

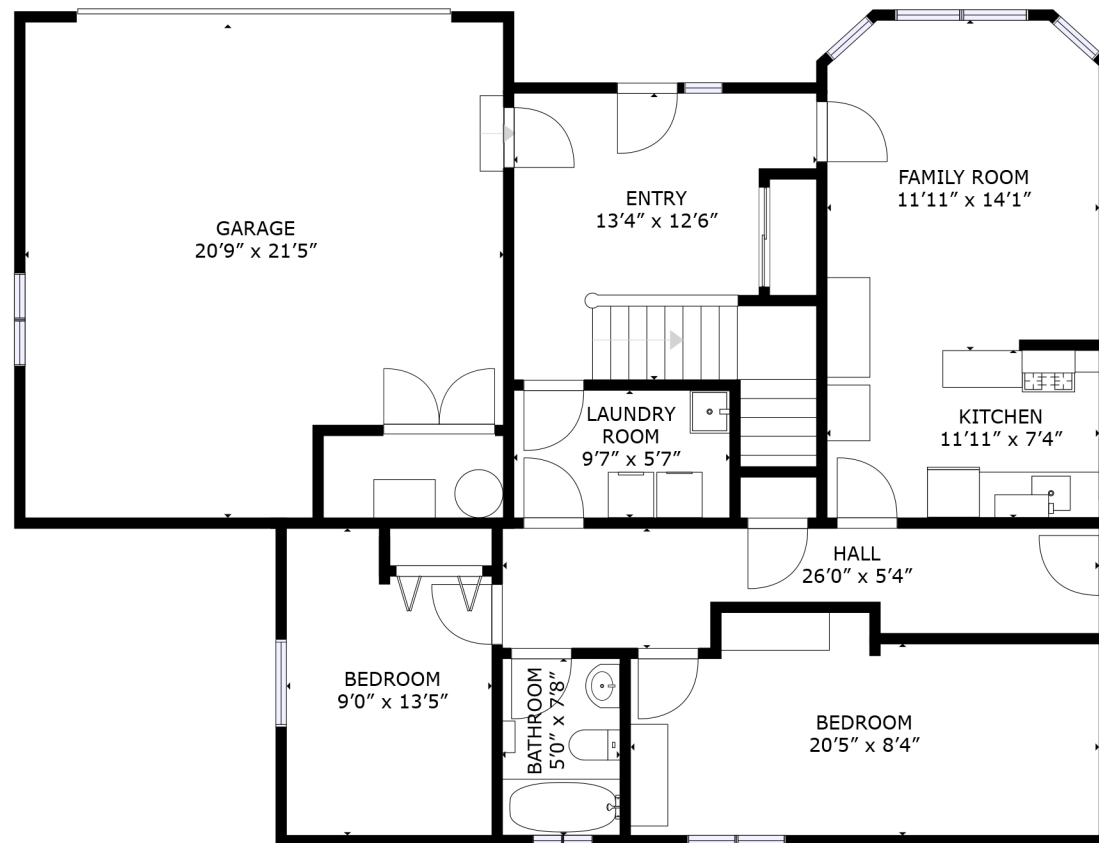
11416 Barclay St, Maple Ridge

Lower Floor: 986 sqft
 Upper Floor: 1188 sqft

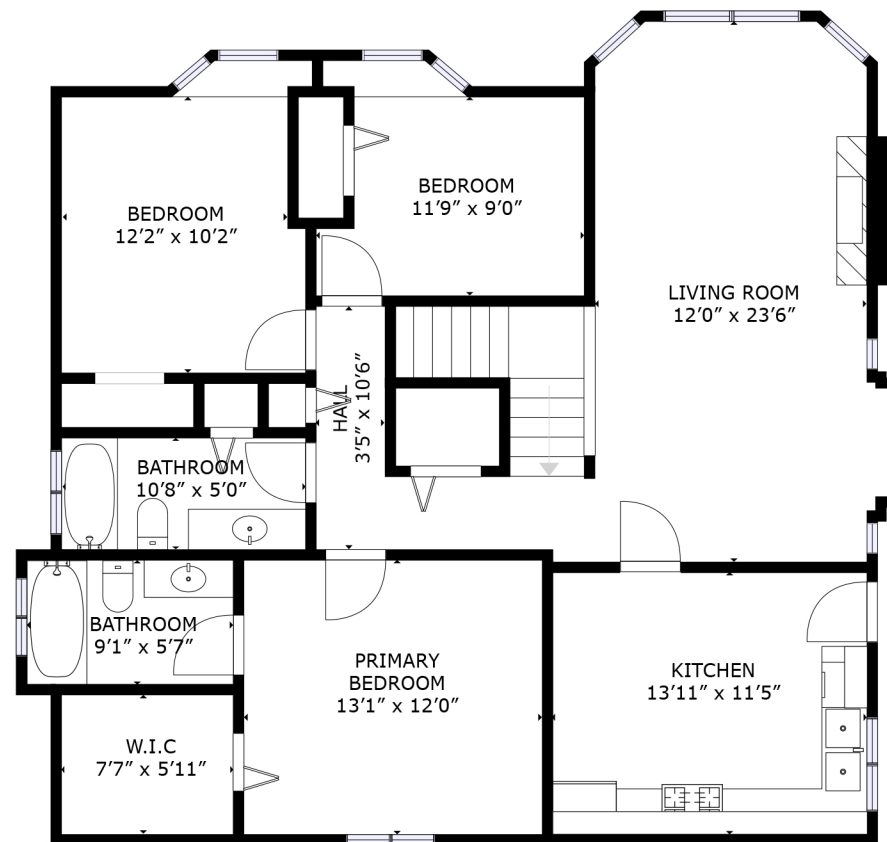
Total Liveable: 2174 sqft

Garage: 447 sqft

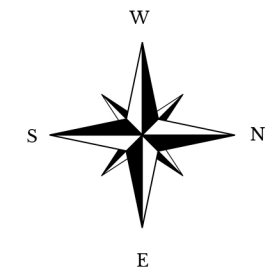
Total Extras: 447 sqft



Lower Floor
 Ceiling: 8'1"



Upper Floor
 Ceiling: 8'0"



Floor plan is for marketing purposes only. Not intended for architectural or construction use. Sizes and dimensions are approximate, actual may vary. All information provided within +/- 2% tolerance.



DAWSON
 MEDIA